





Homestead Road Development



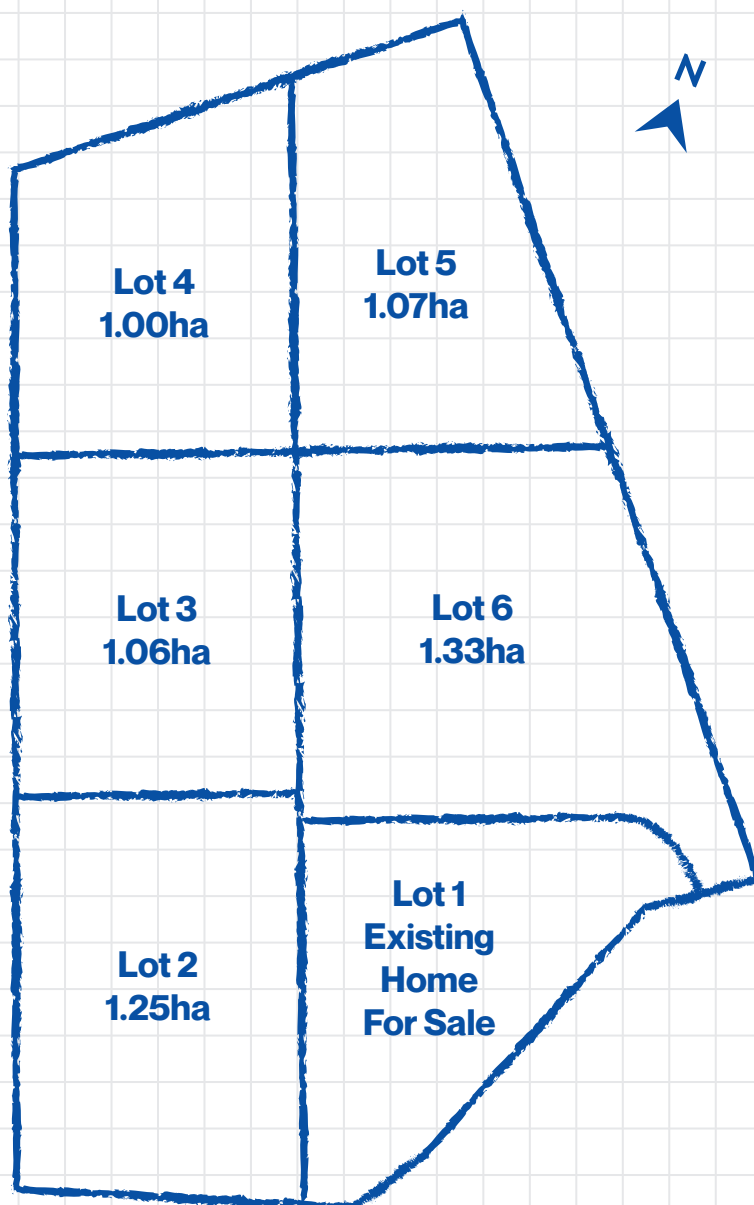
-  **The perfect blank canvas for a bespoke Design & Build.**
-  **Fixed Price Contracts – giving you and the bank peace of mind.**
-  **Project Team Assigned to you – we're with you every step of the way.**
-  **The Full Service – architects, council consents, earthworks, interior designers, builders and landscapers, we provide a start-to-finish service.**

Homestead Road is the perfect spot to build your dream home. On 1-hectare of land, you'll have plenty of space for the whole family, the boat the three-bay shed, and even the chickens.

With stunning views of the mountains and rolling hills, you'll have the peaceful, private feel of the country with the benefit of being just minutes from town. Within walking distance from the Weston supermarket, primary school, and sports domain, this is the perfect location for families who are looking for a bit more space.

These spacious sections are the perfect blank canvas for a bespoke Design & Build. Or if you're not sure where to start, our tried-and-tested plan library is a great starting point.

Whatever your dream, we've got this.



027 364 5921
03 434 8660
info@mcbmar.co.nz
mcbmar.co.nz