





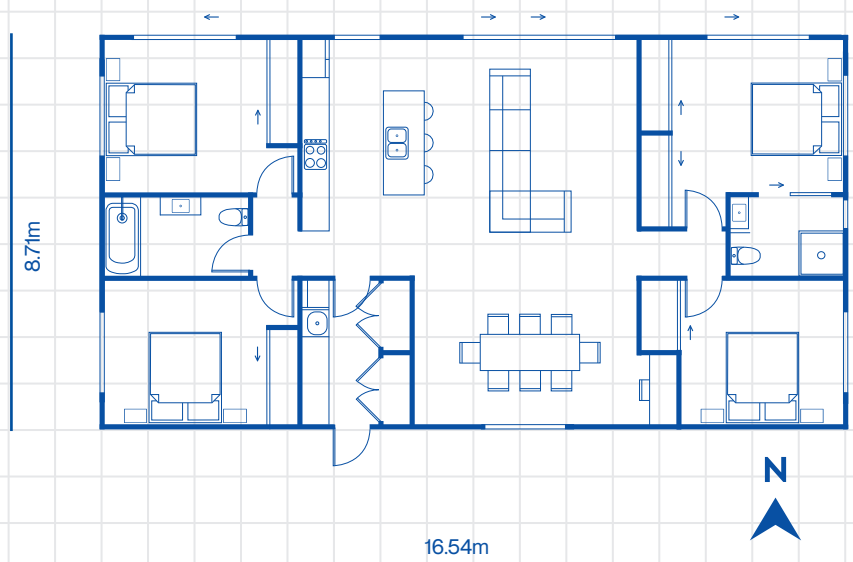
## Home & Land Package

255 Homestead Road, Oamaru  
\$865,000

4  1  2   
144m<sup>2</sup>  1.17ha 

### Features:

- North-facing
- Open-plan kitchen, dining and living area
- North-facing timber deck
- Family bathroom with bathtub
- Skylight
- Heat pump
- James Hardie oblique cladding
- Gable roofline
- The Full Service includes earthworks, council & architect fees, interior design consultation, landscaping including driveway, footpaths, fencing and deck
- Anything you'd like to add? We've got this.



**027 364 5921**  
**03 434 8660**  
[info@mcbrimar.co.nz](mailto:info@mcbrimar.co.nz)

© McBrimar | Pricing valid until 30 April 2025